



iEverydayCARE®

Benefits Summary

Managed by Redirect Health and
newpah
Medical

Routine Care can
Always be \$0
when Redirect Health
prepares your appointment

24/7/365
In English & Spanish

Welcome to SIMPLE AND TRULY AFFORDABLE virtual-first healthcare on your terms. Your iEverydayCARE® membership provides real savings, 24/7/365 access to care, and a dedicated care team to ensure you always get the healthcare you need. Your membership includes primary care (virtual and in-office), mental health, free chiropractic, prescriptions, a large network of doctors, plus low costs for hospitalization and so much more.

We Put People First!

Care Navigation works for everyone.

Finally! Healthcare on your terms – access care anytime, from anywhere, 24/7/365.



Everything You Want in a Healthcare App – and More

- Access Your ID Card(s)
- Speak with a Medical Provider
- Access Plan Details
- Renew Prescriptions
- Update Your Information
- Submit receipts or billing questions

Start with the [Redirect Health Member App](#)

- ✓ Available to answer any questions 24/7/365 in English and Spanish
- ✓ If you have a medical need simply use the [Member App](#), call or text
- ✓ Our Care Team is made up of healthcare experts and medical providers




We Navigate and Coordinate Your Care

- ✓ We'll help you determine if virtual, in-person, urgent, or emergency care is needed
- ✓ Connect to a virtual medical provider at a convenient time for you who will determine if further in-office care is needed
- ✓ We'll assist with any next steps, such as in-office visit scheduling or filling prescriptions at a nearby pharmacy so you never waste any time

Follow-Up that Matters

- ✓ We find you the right level of care to address your medical needs, so you never pay more than you should
- ✓ Whether you had a virtual or in-person visit, we follow-up after your visit to make sure your care plan is staying on track
- ✓ Ever have a question? The Care Team is available 24/7/365



	iEverydayCARE®¹ Hospitalization	iEverydayCARE®¹
Multiplan  PHCS Practitioner Only (or add a doctor prior to visit) [†]	✓	✓
TO GET THE MOST BENEFITS OUT OF YOUR PLAN ALWAYS START WITH THE <u>APP</u> TO SCHEDULE CARE		
Routine Care \$0 member responsibility with Appointment Preparation/Pre-authorization \$50 member responsibility² without Appointment Preparation/Pre-authorization <ul style="list-style-type: none"> • Virtual Primary Care (24/7/365) • In-Office Primary • Urgent Care • Annual Adult Physical¹ & Well Child¹ • 12 FREE Chiropractic Visit per year • X-rays 	✓	✓
\$0 member responsibility Labs RedirectHealth.com/iedc-labs	✓	✓
\$0 member responsibility Mental Health & Tele-Counseling No Coverage without Appointment Preparation/Pre-authorization	✓	✓
Rx & Immunizations (Copays \$10, \$25, \$50, \$100) RedirectHealth.com/iedc-rxformulary	✓	✓
\$50 member responsibility Specialist Consults & Care No Coverage without Appointment Preparation/Pre-authorization	✓	Care Navigation Only Appointment preparation, coordination, navigation, alternative funding management, and pre-negotiations
\$50 member responsibility MRI, PET, CT Scans, Ultrasound & other imaging No Coverage without Appointment Preparation/Pre-authorization	✓	
Hospital Care - Inpatient & Outpatient Individual - (non-embedded) plan year \$2,000 Initial Member Responsibility 20% coinsurance \$4,000 out-of-pocket max ³ Family - (non-embedded) plan year \$4,000 Initial Member Responsibility 20% coinsurance \$6,000 out-of-pocket max ³ Emergency Room \$500 Initial Member Responsibility + 20% Coinsurance Pre-authorization REQUIRED for ALL NON-EMERGENCY Care	✓	
Excluded Services ⁴ Pre-existing conditions, organ transplants, dialysis, skilled nursing and specialty & non-formulary medications	Care Navigation Only Appointment preparation, coordination, navigation, alternative funding management, and pre-negotiations	

This program is NOT insurance. iEverydayCARE is managed by Redirect Health exclusively for members of the Reimagined Society. The Medical Cost Share risk pool is managed by Newpath Medical Inc., a Wyoming Medical Cost Share organized pursuant to Wyo. Stat. Ann. 26-1-104. See program guide for details. Redirect Health and Newpath Medical Inc. are not insurance companies. This program does NOT meet the minimum requirements for MEC (Minimal Essential Coverage) or the ACA (Affordable Care Act). New Jersey, Massachusetts, Vermont, California, Rhode Island and the District of Columbia have passed their own state-level individual mandate laws that mirror the Federal Affordable Care Act. Redirect Health and Medical Cost Share memberships do not satisfy the new individual mandate requirements of these states. It should be expected that state enforced penalties may apply in these states. See State Specific Disclosures www.RedirectHealth.com/state-disclosures for more information regarding program limitations. **1** Routine physical/exam; gynecological exam; mammogram; pap smear; prostate testing (PSA); other routine lab and immunizations. **2** Maximum allowable is 140% of Medicare allowable. **3** Eligible benefits subject to deductible and copay counts toward max out-of-pocket. Excludes prescription drug benefits, pre-existing conditions, and subject to program sub-limits. **4** See Membership Guidelines for coverage limitations and details. **†** Any doctor who accepts the Redirect Health Usual, Customary & Reasonable (UCR) Agreement can be in-network This overview is intended only as an illustration of the benefit plan design. Please refer to Membership Guidelines for actual coverage, limitation, and exclusion provisions.

How your membership works

Get the most out of your healthcare by following these simple steps.

What if I need care?

Always use the [Member App](#) to schedule care and prepare for your appointments. Many times you'll get everything you need over the phone. Your Care Team will make sure you always get the right care. Never spend more than you should.

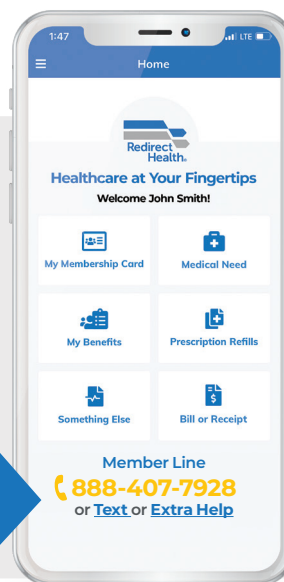
What if I get a bill?

Submit doctor's bills through the SECURE [Member App](#) (but most times we'll pay your doctor before you get a bill)

What if I have extra questions?

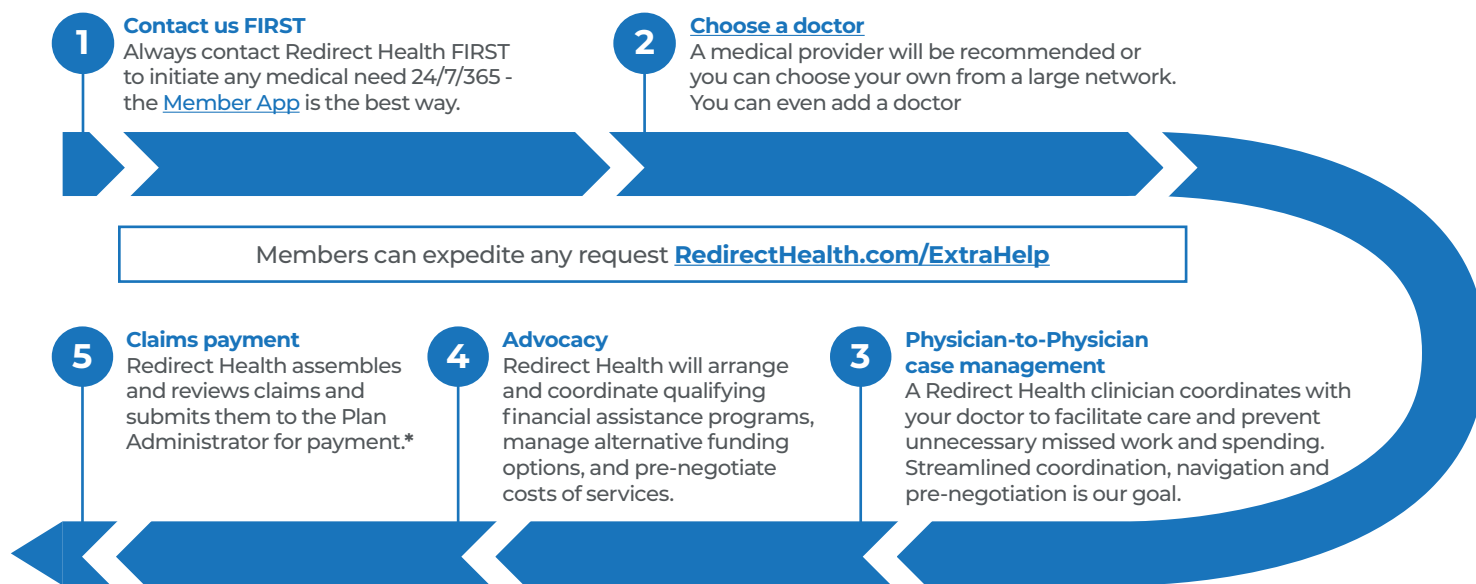
Expedite any request or obstacle on the [Member App](#) or use RedirectHealth.com/ExtraHelp

[Click here](#) to download the App
RedirectHealth.com/app



How Needs are Shared with the Community

Your Redirect Health membership protects you and your family from high-dollar medical expenses



How Pre-Existing Conditions are shared

A condition is considered pre-existing for a member or dependent if symptoms or treatment have occurred within the 12 months prior to joining the Medical Cost Share. See the Membership Guidelines for detailed description of what will be considered a pre-existing condition. **Controlled diabetes, hypertension, high cholesterol, seasonal allergies and intermittent asthma will not be considered pre-existing when reported prior to membership effective date.**

Conditions beginning after a member's effective date will be shared after paying their \$2,000 initial member responsibility then 20% with a maximum out-of-pocket of \$4,000^A per year. See the Membership Guidelines for sharing rules.

Additional Sharing Restrictions

See Member Guidelines for detailed shareable restrictions.

Pre-existing conditions become eligible for sharing based on members' tenure with the plan, as indicated by the following graduated sharing schedule:

Time After Membership Effective Date	Shareable
First 12 months	Not shareable
Months 13-24	Shareable to \$25,000
Months 25-36	Shareable to \$50,000
Month 37 and after	Shareable to \$125,000

*Specialist, advanced imaging, and hospital claims must be pre-authorized and coordinated by Redirect Health to be eligible for payment. ^ASubject to program sub-limits. Prescription drug benefits are not included in out-of-pocket max calculation..

Pricing Details

iEverydayCARE® Individual and Family


Pricing is based off primary members age, the primary is the oldest member of the household.

Effective 10/01/22

iEverydayCARE® Hospitalization

Managed by  newpath Medical

iEverydayCARE® Hospitalization

Multiplan  PHCS Practitioner Only (or add a doctor prior to visit)†	✓		
	18 - 44 yrs	45 - 59 yrs	60 - 64 yrs
Member Only	\$319*	\$379*	\$449*
Member + Spouse	\$639*	\$749*	\$849*
Member + Child(ren)	\$669*	\$779*	\$879*
Member + Family	\$999*	\$1,099*	\$1,119*

iEverydayCARE® Only

Multiplan  PHCS Practitioner Only (or add a doctor prior to visit)†	✓		
	18 - 44 yrs	45 - 59 yrs	60 - 64 yrs
Member Only	\$125	\$125	\$125
Member + Spouse	\$240	\$240	\$240
Member + Child(ren)	\$240	\$240	\$240
Member + Family	\$365	\$365	\$365

This program is NOT insurance. iEverydayCARE is managed by Redirect Health exclusively for members of the Reimagined Society. The Medical Cost Share risk pool is managed by Newpath Medical Inc., a Wyoming Medical Cost Share organized pursuant to Wyo. Stat. Ann. 26-1-104. See program guide for details. Redirect Health and Newpath Medical Inc. are not insurance companies. *Households with at least one member who uses tobacco products are NOT eligible for the inclusive \$75 discount as reflected in the Hospitalization prices above.